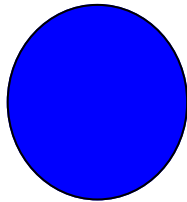
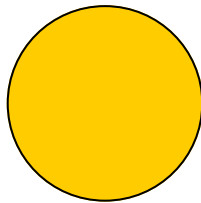


## 2nd Car Falls Back - Some Explanations The Positions Of The Cars

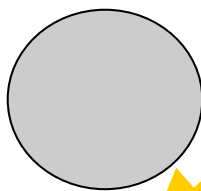
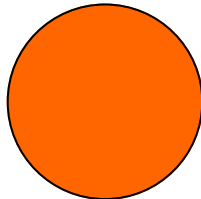
Lead car



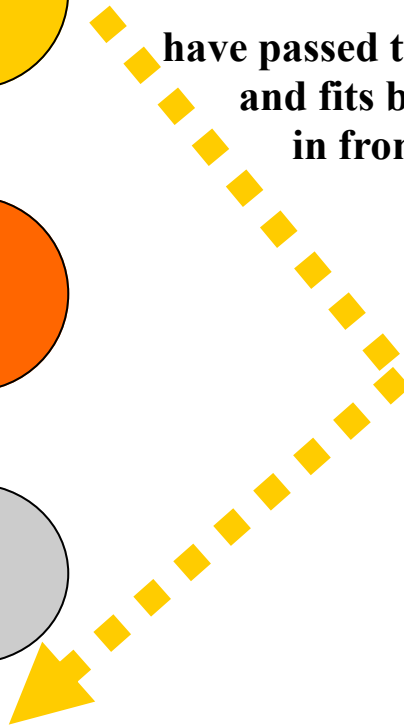
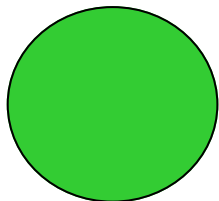
2nd car



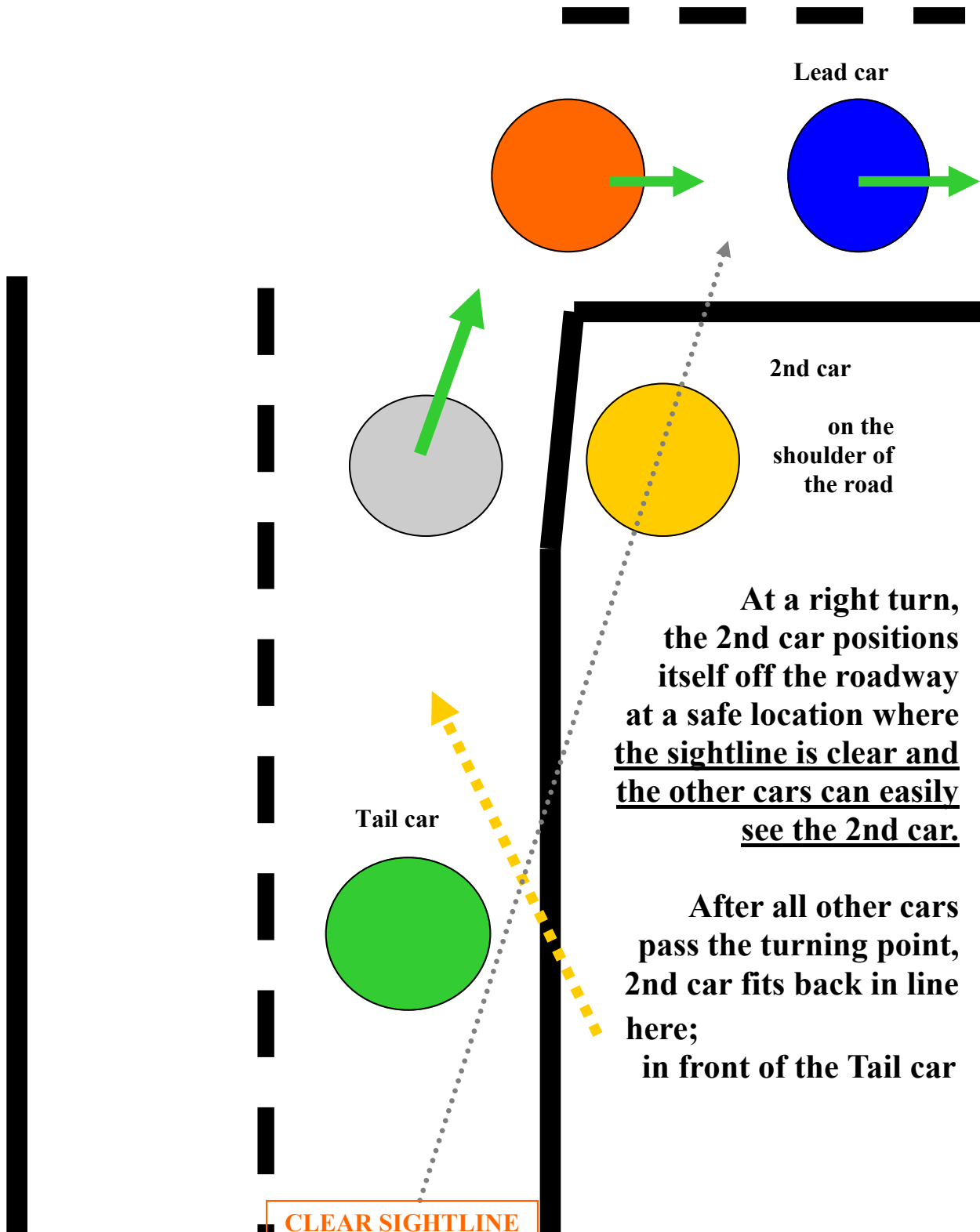
**The 2nd car moves off the road  
at a change of direction,  
and changes position  
after other cars  
have passed the turning point  
and fits back into the line  
in front of the Tail car.**



Tail car

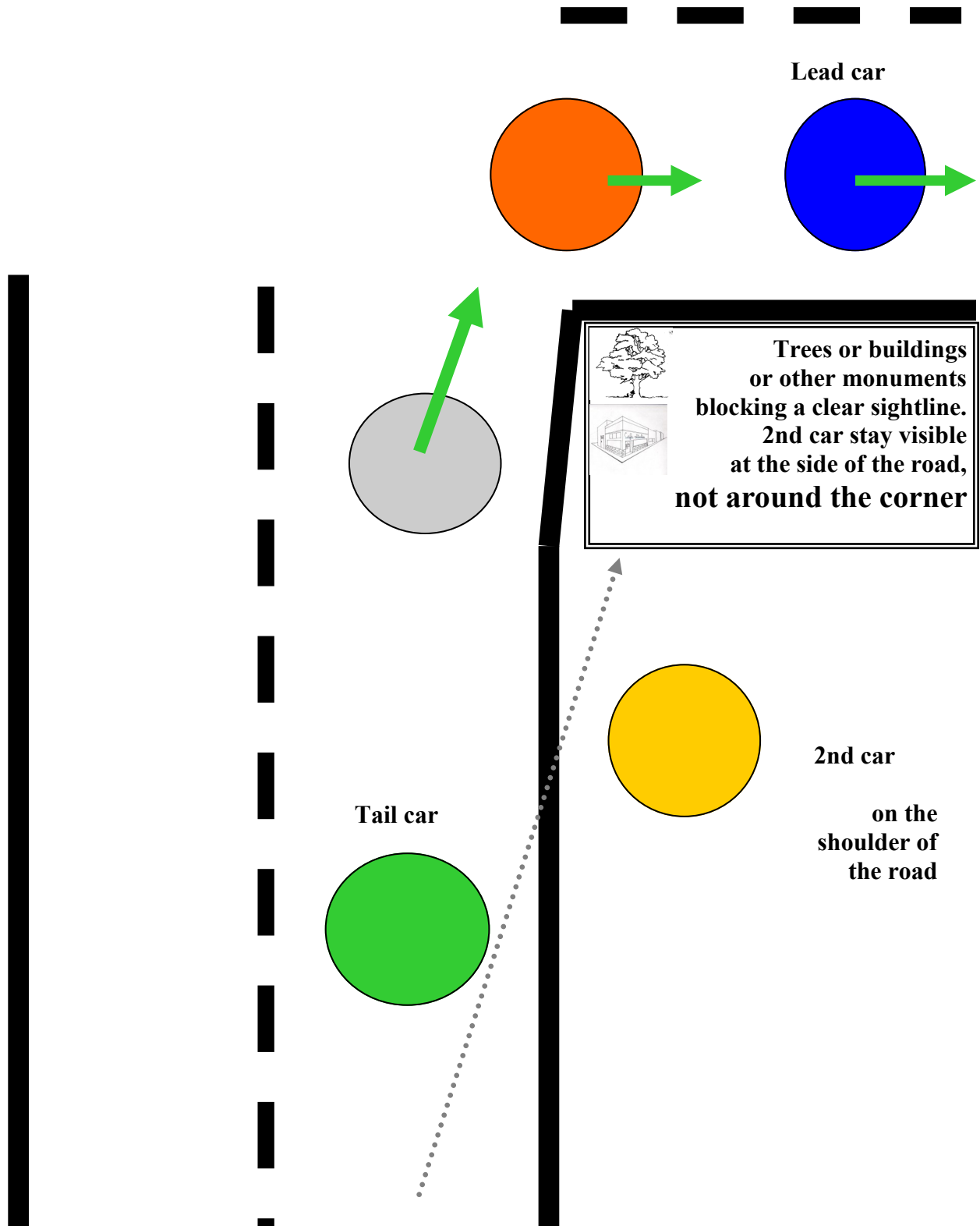


## 2nd Car Falls Back - Some Explanations At a RIGHT Turn Change of Direction: Sightline Clear

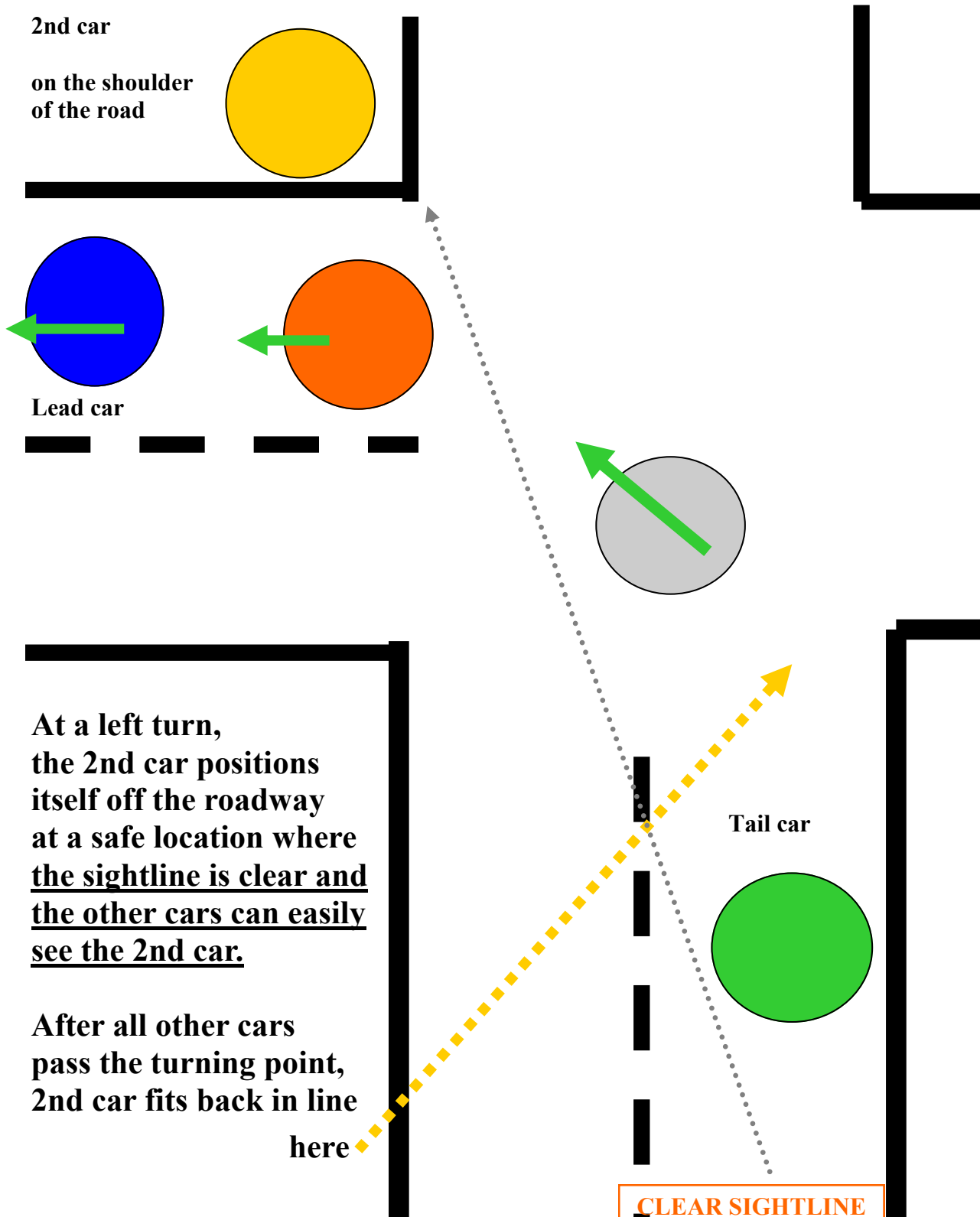


# 2nd Car Falls Back - Some Explanations

## At a RIGHT Turn Change of Direction: Sightline Blocked



## 2nd Car Falls Back - Some Explanations At a LEFT Turn Change of Direction: Sightline Clear



# 2nd Car Falls Back - Some Explanations At a LEFT Turn Change of Direction: Sightline Blocked

